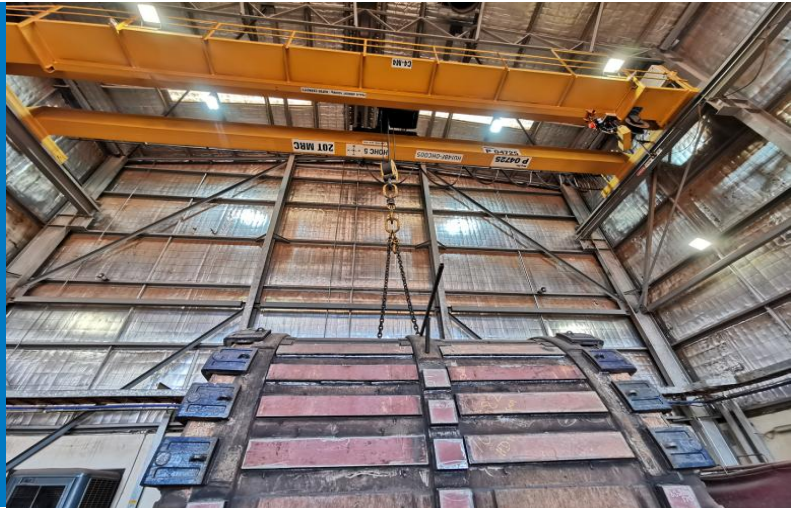


# Slingsafe

No dropped loads.  
No snapped shackles.  
No damaged slings.  
Simple!



It's rare that a lift is done with rigging that exceeds the capacity of the crane. This means that there is usually a chance that a snagged or miscalculated load will result in the failure of the rigging and a dropped load.



## Take action to control the risk.



**Slingsafe completely eliminates this risk in the simplest way possible.**

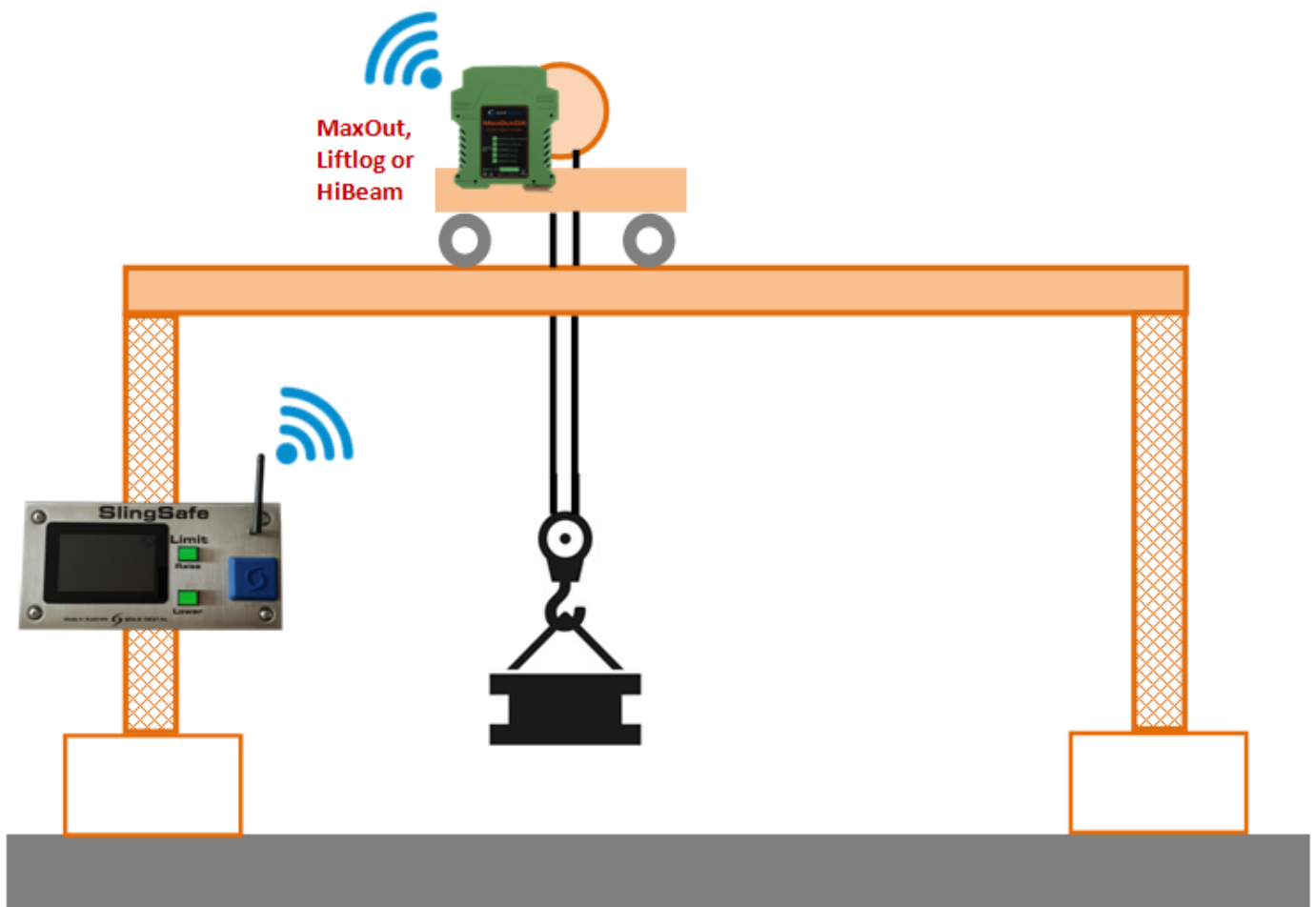
- Rig the load
- Set the cut out load of the crane to the SWL for the lift.
- Lift with confidence.

### Audit Every Lift

- Slingsafe is compatible with AccessPack [www.accesspack.com.au](http://www.accesspack.com.au) so you get a record of who set what limit for every lift.
- Slingsafe works with Liftlog [www.liftlog.com.au](http://www.liftlog.com.au) so you get a black box flight recorder for your crane.

Set the load limit  
from the ground  
**BEFORE** the lift.

# How It Works



Slingsafe lets the crane user lower the maximum lifting capacity of the crane to match the capacity of the slings and shackles being used.

The crane powers up with a 500kg load limit. This is enough to position the crane and rig the load. The operator then identifies themselves to the Slingsafe unit with their ID card and sets the load limit to match the rated capacity of the rigging.

As the load is lifted the current load and the set limit is displayed on the Slingsafe unit. If the set limit is exceeded, then lifting is disabled. The load limit resets to 500kg when the e-stop button is pressed.



Contact us today and eliminate the risk of dropped loads.

P: +61 8 9277 0900 | E: [sales@soledigital.com.au](mailto:sales@soledigital.com.au)